

# FEATURES

## Commercial Lots Information:

1. Within the Village limits
2. On USH #11 - Daily average traffic count is 8,000
3. Water and sewer can be a private well & septic system, or municipal water and sewer is available with all engineering work done.
4. One mile to the Village Green (center of village)
5. Building lots starting as low as \$35,000

---

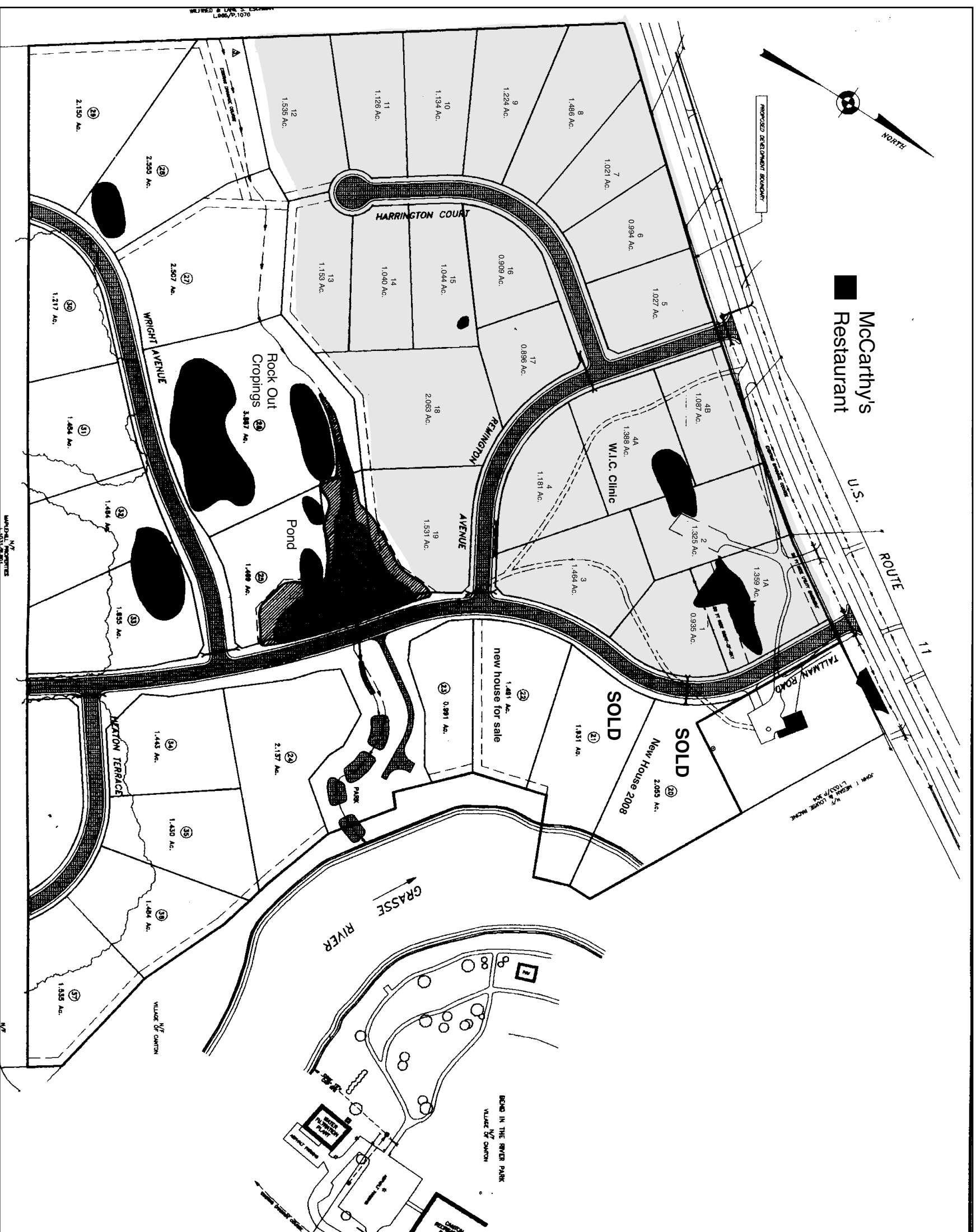
## Residential Lots Information:

1. Residential lots will be offered for sale when village water and sewer services are installed in the development or with onsite well and septic system approved by NYS Dept. of Health.
2. All lots are in the Village of Canton, and enjoy village fire and police protection.
3. Large lots (.99 acre to over 2 acres).
4. Grasse River frontage or views on many lots.
5. Historically named village streets Remington Ave., Harrington Court, Tallman Road, Heaton Terrace and Wright Ave.
6. Lot prices \$25,000 to \$35,000 in the current phase of development.



**Building Lots  
For Sale**

**CANTON, N.Y.**



**Commercial =**  
**Lots 1 thru 19 (Shaded Area)**  
**Residential =**  
**Lots 20 thru 37**

For further information, please contact Ted Lawrence at 386-4518, Greg Walsh at 322-3520, gwalsh1889@hotmail.com or Debbie Gilson at 386-5400 (county seat realty).

These commercial lots are situated adjacent to US Route 11 and many have good site visibility from this main highway. Many lots have ample trees that make an appealing setting.

Commercial lots are shovel ready. All zoning (C-2) and engineering has been approved. Site plan review is all most commercial businesses would need.

Residential lots are located just off Route 11. Many lots have a view of the Grasse River. There are also lots available in a wooded setting making it an appealing site to build a home.

The next phase of the residential section will probably open up lots 24, 25, 33, 34, and 35 in 2008. We are interested in having townhouses on lots 1, 3, and 4.